

## LT-07-SAN Nipple Installation Instructions

1. Bore a 2.120" ID hole in top or side of pipe or tank.
2. Mount MANDREL in NIPPLE. Make sure that MANDREL contacts lip on NIPPLE.
3. Expand MANDREL by tightening MANDREL NUT. Thread HANDLE onto exposed TAPER SCREW.
4. Place NIPPLE into bored hole so that NIPPLE bottom is flush with pipe I.D. On small diameter pipes the NIPPLE protrudes into the flow line.
5. Tack weld the NIPPLE at three points. Proceed to weld all around.
6. Loosen HANDLE and MANDREL NUT.
7. Free MANDREL by tapping TAPER SCREW loose. Using a welding clamp, grip the outboard part of the MANDREL and work free.

CAUTION: Do not pull TAPER SCREW.

### PAPER MACHINE COMPONENTS

DANBURY, CONNECTICUT U.S.A.

PART NAME LT-07-SAN NIPPLE WELDING MANDREL ASSEMBLY

MATERIAL #303 STAINLESS STEEL	DATE Jan. 21, 1994	SCALE FULL
----------------------------------	-----------------------	---------------

QUANTITY	DRAWN BY L.W.	ORIG. DWG.	ASSY. DWG.
----------	------------------	------------	------------

BREAK ALL SHARP EDGES AND CORNERS

DWG. NO.

FRACT. DIMS. +/- 1/64", DECIMAL DIMS. +/- .005"  
ANGLES +/- 1/4" UNLESS OTHERWISE SPECIFIED

2230-A

## LT-07 Nipple Installation Instructions

1. Bore a 1.900" ID hole in top or side of pipe or tank.
2. Mount MANDREL in NIPPLE, making sure that both NIPPLE and MANDREL bottoms are flush.
3. Expand MANDREL by tightening MANDREL NUT.
4. Thread HANDLE onto exposed TAPER SCREW.
5. Place NIPPLE into bored hole. Locate SET-SCREW holes to suit gauge/switch installation, placing nipple bottom flush with pipe ID. On small diameter pipes the NIPPLE protrudes into the flow line.
6. Tack weld the NIPPLE at three points. Proceed to weld all around.
7. Loosen HANDLE and MANDREL NUT.
8. Free MANDREL by tapping TAPER SCREW loose. Using a welding clamp, grip the outboard part of the MANDREL and work free.

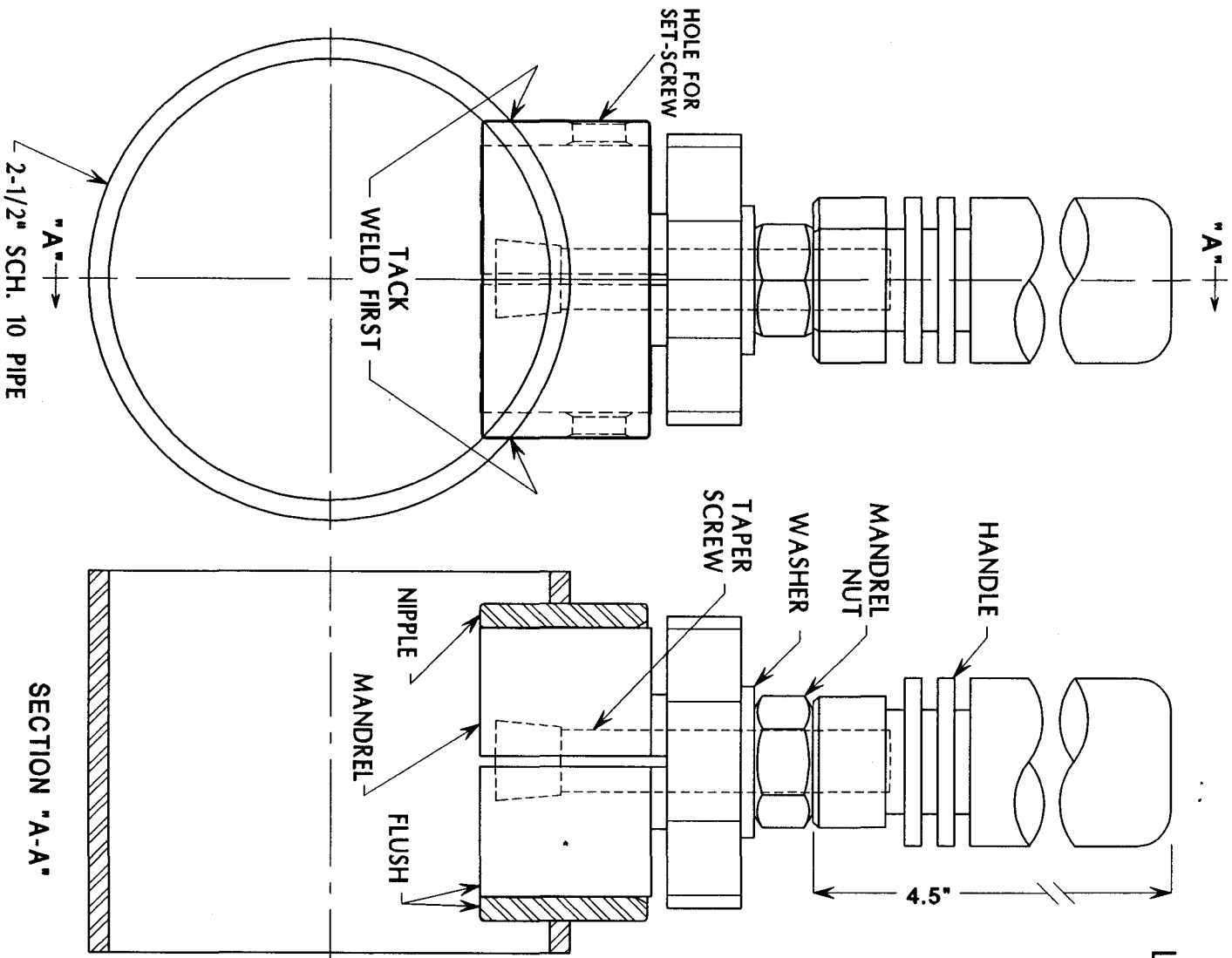
**CAUTION: Do not pull TAPER SCREW.**

Part Number: LT-07-MDL Price:\$100.00-stock

### PAPER MACHINE COMPONENTS

DANBURY, CONNECTICUT U.S.A.

PART NAME		LT-07 NIPPLE WELDING MANDREL ASSEMBLY	
MATERIAL			
#303 STAINLESS STEEL		DATE	SCALE
DRAWN BY		Jan. 21, 1994	FULL
QUANTITY	L.W.	ORIG. DWG.	ASSY. DWG.
BREAK ALL SHARP EDGES AND CORNERS			DWG. NO.
FRACT. DIMS. +/- 1/64", DECIMAL DIMS. +/- .005" ANGLES +/- 1/4. UNLESS OTHERWISE SPECIFIED			2225-A



2-1/2" SCH. 10 PIPE

SECTION "A-A"