



# Process Measure Control

## OPEN FACE LEVEL TRANSMITTER FOR WASTEWATER VERSALINE® OEM VL2112 SERIES

PMC VersaLine® VL2000 Series submersible level transmitters are specifically designed for use in wastewater and pump/lift station type applications. The VL2112-S-B246 special version is designed for OEM applications where affordability is a major focus. All the major packaging features of our flagship VL2000 series product are retained. These include the ceramic sensing element with its rugged flush open face design avoiding clogging or sludge build up from materials often encountered in wastewater. The stainless steel construction is standard but where chemical environments dictate an option of Titanium is available. The standard polyurethane vented cable is molded to the transmitter providing the highest integrity waterproof assembly well proven in thousands of installations worldwide. FEP cable is available as an alternate for harsh environments.

Other VersaLine® series, VL3000, VL4000 and MTM3000 offer similar performance and packaging suitable for deep well and surface level measurements. Please refer to appropriate data sheets.

### Features

- Open face, clog free
- 0.25% Accuracy
- 10" to 650ft WC
- 316L SS

- Ideal for OEM



### Applications

- Sewage Lift
- Water Level
- Waste Water
- Oceanography
- Ground Water

## TECHNICAL SPECIFICATIONS

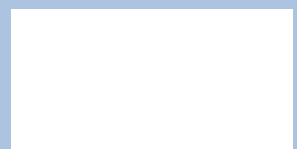
<b>Nominal Full Scale Ranges (FS)</b>	2.5 psig ≈ 6.5ft WC 5 psig ≈ 12.5ft WC 14 psig ≈ 30ft WC 28 psig ≈ 65ft WC 55 psig ≈ 130ft WC 140 psig ≈ 330ft WC 280 psig ≈ 650ft WC
<b>Accuracy</b>	±0.25% FS (BSL) <i>Combined non-linearity, hysteresis &amp; repeatability</i>
<b>Overpressure</b>	For full scale ranges up to 20 psi - 10X Above 20 to 150 psi-4X FS For 280 psi range - 2X FS
<b>Operating Temperature Range</b>	-10° to + 175°F (-20° to +80°C)
<b>Compensated Temperature Range</b>	30° to 85° F (-2° to +30° C)
<b>Temperature Effects (Compensated)</b>	±2.0% for ranges for 5 psi and below ±1.5% for ranges above 5 psi
<b>Electrical</b>	Output: 0.5 - 4.5 VDC with 5.0 VDC regulated supply Zero and Full Scale set: +/- 0.04 VDC
<b>Intrinsically Safe Approvals</b>	See VL2000 Series Data Sheet
<b>Cable</b>	Polyurethane molded, vented with Kevlar, 4 conductors <i>Contact factory for FEP cable</i>
<b>Housing</b>	316L Stainless Steel <i>Contact factory for Titanium with 5-year corrosion warranty</i>
<b>Weight (excluding cable)</b>	<3 oz. (excluding cable)
<b>Special Requirement</b>	Contact Factory for all Special Requirements

PMC-STs, Inc. adopts a continuous development program which sometimes necessitates specification changes without notice.

### Contact

PMC-STs, Inc.  
11 Old Sugar Hollow Rd  
Danbury, CT 06810 USA  
sales@pmc1.com  
Tel: 203-792-8686  
Fax: 203-743-2051  
www.pmc1.com

Represented by:



**Your depth and level specialists for Ground, Surface, Sea and Waste Water**

## PMC Configurator

VL 2 1 1 2 S-B246

<b>Model Construction</b>	Open Face, Ceramic 1"	2
<b>Housing Material</b>	316L Stainless Steel	1
<b>Electrical Connection</b>	Polyurethane molded cable Cable length must be specified at the time of ordering.	1
<b>Electrical Configuration</b>	0.5-4.5VDC	2

**Example Ordering Format: VL2112 - S-B246 - 5 psig - 20' cable**

## RELATED PRODUCTS

An extensive range of accessories is available including Sink Weights, Cable Hangers, and a unique method of avoiding water ingress through the breather tube for vented gauge transmitters. Also offered are Calibration Adaptors, Lightning Protection, and Cable Termination Boxes. Please see separate data sheet VLA 702 detailing these items.

**Sink Weight - VL2000 Series:** This has been developed specifically for the VL2000 and unlike most competitive devices which are integral can be added or removed from the transmitter. Often referred to as a "cage" sink weight/anchor for transmitters installed on the bottom of wastewater or sewage lift tanks. 4" high x 4" dia. and approximately 6 lbs. Please specify SW 2000.

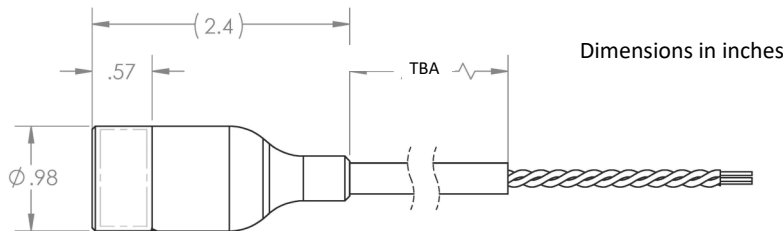


## FOR ZERO MAINTENANCE



In order to reduce on-site maintenance PMC has developed the **MP 11** Moisture Protection Reference Volume. For vented gauge transmitters this provides total isolation from the atmosphere by using a custom bladder, while maintaining the high performance of the transmitter. Totally maintenance free. Please specify MP 11.

## MECHANICAL DETAILS



## ELECTRICAL DETAILS

+ Supply	Common	+ Output	Ground
Red	Black	White	Green

## Process Measure Control

### Sensors for

- Pressure
- Level
- Vacuum
- Humidity
- Temperature
- Force
- Position

### Accessories

PMC offers a range of Accessories and variants for depth and level transmitters. Reference separate date sheet.

- Termination Enclosure
- Cable Hanger
- Moisture Protection
- Calibration Adaptor
- Sink Weights
- Level Meters

### PMC is

- Engineering Driven
- Confidential
- Experienced
- Responsive
- Dynamic
- Friendly

**Your depth and level specialists for Ground, Surface, Sea and Waste Water**