



## ASH SERIES HIGH PERFORMANCE PRESSURE TRANSDUCER

The ASH Series of High Performance Pressure Transducers have been designed for high temperature installations in motorsport and automotive applications; ideal for high precision data acquisition or control systems. These transducers can be installed directly onto vehicles, or as part of a test stand or dyno.

Offering a high level of reliability and endurance the ASH is protected against the high vibration, shock and high temperatures found in motorsport. Continuous operation up to 150°C allows for installations in hot zones. With a modular construction and programmable amplifier, this provides a fast delivery time for standard and custom configurations.

Pressure ranges are available between 1.2 to 400 Bar in either Absolute, Gauge or Sealed Gauge reference. Industry standard 3-wire electrical connections for the Pressure signal allow configuration with most common ECU's and data logging systems. The ASH Series is race proven in many formulae around the world, offering a cost effective solution for professional engineers.

### TECHNICAL SPECIFICATIONS

<b>Pressure Reference</b>	Absolute, Gauge and Sealed Gauge
<b>Standard Pressure Ranges (Bar)</b>	Low Range: 1.2, 4 & 10 High Range: 50, 100, 200 & 400
<b>Proof Pressure (Over range)</b>	300% of Range / 150% of Range
<b>Burst Pressure</b>	>1000% of Range / >300% of Range
<b>Accuracy</b>	±0.08% FS Combined Linearity & Hysteresis (CNLH) ±0.2% FS Combined Linearity & Hysteresis (CNLH)
<b>Thermal Accuracy</b>	<±0.25% FS TEB within Compensated Range Zero ±0.01% FS/°C (Sensitivity ±0.01% of Reading /°C)
<b>Output</b>	0.5V to 4.5V (±0.25%)
<b>Supply</b>	5V (±0.5V) Ratiometric or 8-16V d.c.
<b>Operating Temperature Range</b>	-40°C to +150°C
<b>Compensated Temperature Range</b>	0°C to +125°C
<b>Bandwidth</b>	0-1000Hz, 2000Hz or 5000Hz (Select at time of Order)
<b>Construction</b>	Fully Welded Stainless Steel (with a Viton internal O-ring)
<b>Electrical Connection</b>	50cm 26AWG, 55 Spec Wire +DR25 Sleeve
<b>Process Connection (Thread Size)</b>	Please see Part Number Configurator
<b>Protection Class</b>	IP67
<b>EMC Protection &amp; Vibration</b>	EN E50082-1 and up to 5KHz Sine at 100g
<b>Weight</b>	54g (Including Cable)

Ka Sensors adopts a continuous development program which sometimes necessitates specification changes without notice.

## Sensors For Motorsport

### Features

- High Fatigue Life
- High Accuracy
- 1.2 to 400 Bar Range
- Rugged Design
- Amplified Output

### Applications

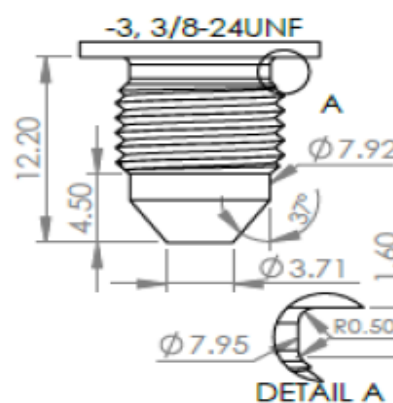
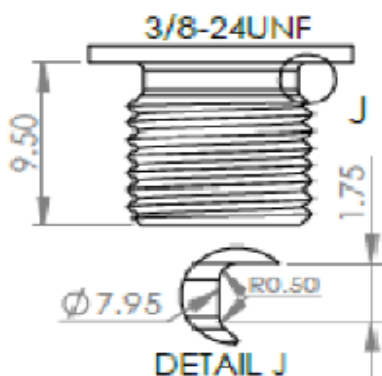
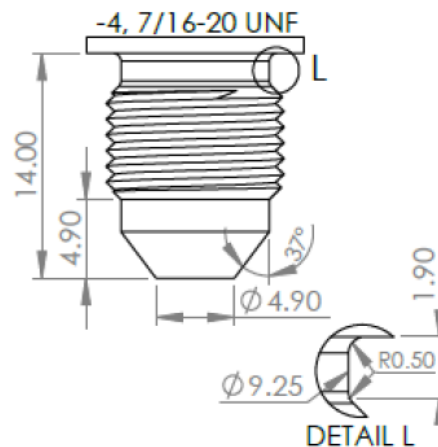
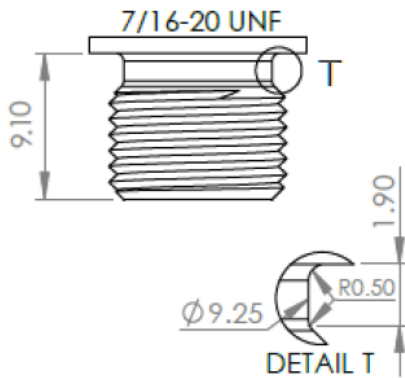
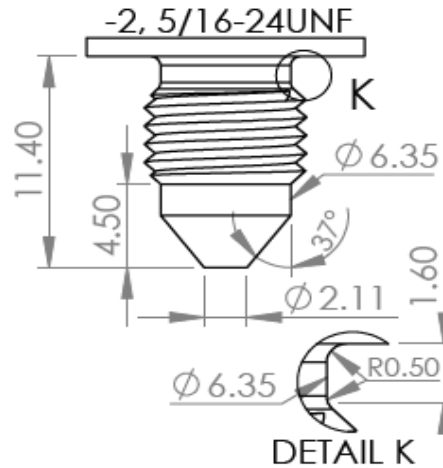
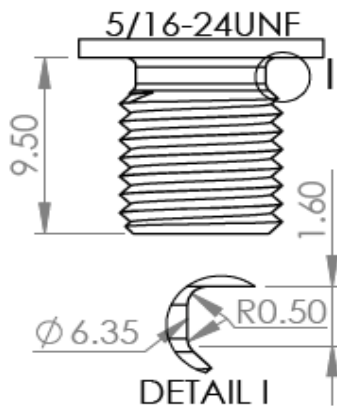
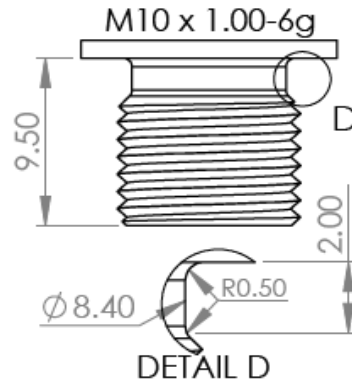
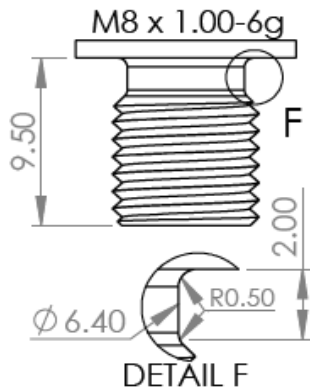
- Coolant
- Brakes
- Water
- Boost
- Fuel
- Oil

kasensors.com  
 sales@kasensors.com  
 +44(0)1476 568057

ASH 08.21



# PROCESS CONNECTIONS



*Sense  
Analyse  
Control*

## Services for:

- Data Logging
- Telemetry
- Controls
- Wiring

## Contact us

KA Sensors Ltd  
Unit 14 & 15  
The Old Malthouse  
Springfield Road  
Grantham  
Lincolnshire  
United Kingdom  
NG31 7BG

kasensors.com  
sales@kasensors.com  
+44(0)1476 568057

ASH 08.21